

BLOCK OUT



Instruction Manual
10 Bonus brainteasers with answers

SOLVING THE PUZZLE!

Amaze family and friends with the challenge of getting the solid wooden block out of its base without touching the puzzle or even the table!

It seems impossible but simply blow sharply over the top of the block and due to some amazing physics the block pops out.

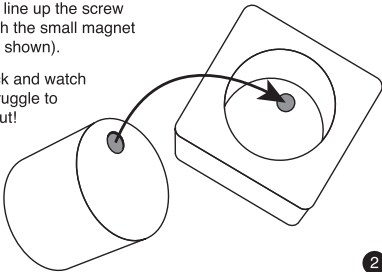
1



FOOL YOUR FRIENDS!

For added fun, line up the screw in the block with the small magnet in the base (as shown).

Now stand back and watch your friends struggle to get the block out!



10 bonus Mensa brainteasers

Challenge 1

Rearrange the letters of '**KING LIFTS CONCRETE**' to give three sports.

What are they?

Scribble zone

Challenge 2

Rearrange the letters of '**AMONG**' to give a fruit.

What is it?

Scribble zone



Challenge 3

Which word connects **FORM**,
LEVEL, **WOUND** and **PHONE**?

Scribble zone

Challenge 4

Clock A was correct at midnight. From that moment it began to lose one minute per hour. The clock stopped two hours ago showing clock B. What is the correct time now? The clock runs for less than 24 hours.

A

00:00

B

12:47

Scribble zone

Challenge 5

I am an item of jewellery. Change one letter and I am the outer skin of fruit. Change another letter and I am a current of air. Change a further letter and I am an alcoholic drink. Change one final letter and I am a trailing plant. What was I and what did I become?

Scribble zone

Challenge 6

Find a word to fit the first clue then add one letter to give a word to fit the second clue.

What are the words?

REMUNERATED

CHEQUERED FABRIC

Scribble zone

Challenge 7

Find a word to fit the first clue then remove one letter to give a word to fit the second clue.

What are the words?

**FINE PARTICLES
CONTROL**

Scribble zone

Challenge 8

Rearrange the following letters to give two words. All seven letters must be used in each word.

What are the words?

AAEGMNT

Scribble zone

Challenge 9

Which word begins and ends in 'K'
and contains four 'Ks' in total?

Scribble zone

Challenge 10

A 220 yard long train, travelling at 50 mph, enters a two mile long tunnel. How long will elapse between the moment the front of the train enters the tunnel and the moment the end of the train clears the tunnel?

Scribble zone

ANSWERS

1. Tennis, cricket and golf
2. Mango
3. Entry
4. 15:00 or 3pm
5. Ring, rind, wind, wine and vine.

6. Paid and plaid.
7. Powder, Power
8. Magnate, Magenta
9. Knickknack
10. 2 minutes and 33 seconds



Visit the app store and search for 'Mensa Daily Q'. Download to receive 70 days' worth of Mensa brainteasers delivered to your device.

CURIOUS? |

Take the Mensa online workout at
www.mensa.org.uk





Designed & Distributed by:
China Industries Ltd. T/A Wow! Stuff,
Creative Industries Centre, Wolverhampton Science Park,
Wolverhampton, WV10 9TG, UK

www.wowstuff.com

Made in China
IQ-1052R



WARNING:

Not suitable for children under 3 years,
due to small parts which may present a
choking hazard.